



MONTHLY MEMBERSHIP PROGRESS REPORT

District 16 L

Results as of: 12/31/2018

GMT: MAHESH CHITNIS

LOCATION NEW JERSEY

GMT CA

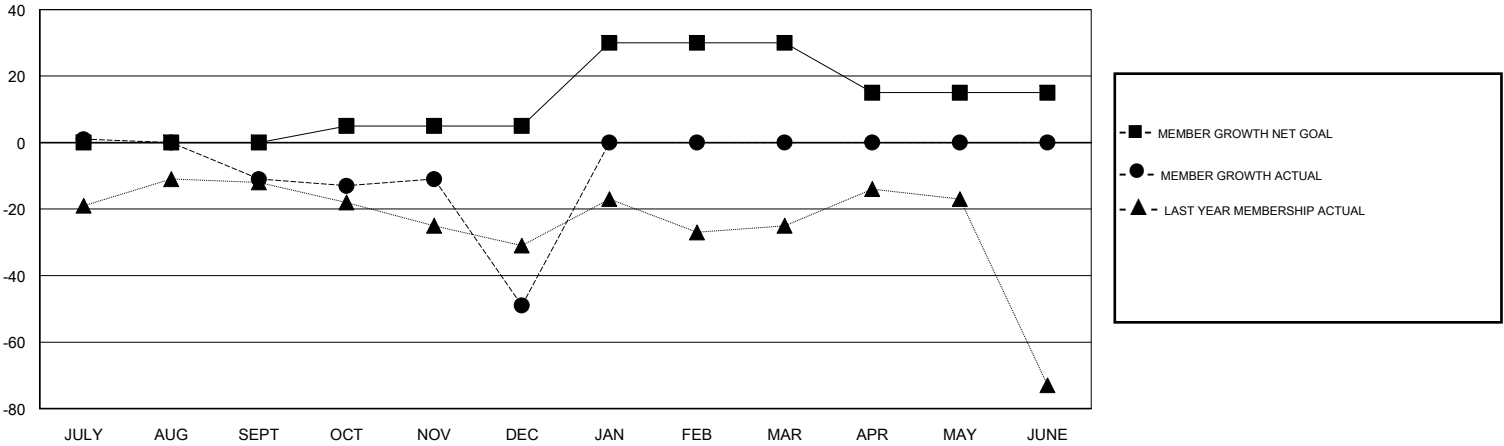
| Clubs | | | |
|-----------------------|---------------|-----------|---------------|
| RESULTS FOR 2018-2019 | | | |
| QUARTER | NEW CLUB GOAL | NEW CLUBS | DROPPED CLUBS |
| JULY/AUG/SEPT | 0 | 0 | 0 |
| OCT/NOV/DEC | 0 | 0 | 0 |
| JAN/FEB/MAR | 1 | 0 | 0 |
| APR/MAY/JUNE | 0 | 0 | 0 |

| Members | | | |
|-----------------------|------------------------|----------------------|--|
| RESULTS FOR 2018-2019 | | | |
| QUARTER | MEMBER GROWTH NET GOAL | MEMBER GROWTH ACTUAL | DROPPED MEMBERS ACTUAL (including transfers) |
| JULY/AUG/SEPT | 0 | 53 | 40 |
| OCT/NOV/DEC | 5 | 40 | 72 |
| JAN/FEB/MAR | 25 | 0 | 0 |
| APR/MAY/JUNE | -15 | 0 | 0 |

GOALS AND ACTUAL NEW CLUBS CUMULATIVE



GOALS AND ACTUAL MEMBERS CUMULATIVE



| | | |
|--|---|--|
| DROPPED CLUBS: 0 | 24 CLUBS OF 66 ADDED 1 OR MORE NEW MEMBERS | <u>GENDER DISTRIBUTION</u> MALE 1,097 (69.17%) FEMALE 489 (30.83%) Women Percentage Fiscal Year Goal: 32% |
| <u>DROPPED MEMBERS</u> DECEASED 18 CLUB CANCELLED 0 OTHER 94 TOTAL 112 | CLICK HERE FOR CUMULATIVE MEMBERSHIP DATA | TOTAL FAMILY UNIT MEMBERS 238 FAMILY MEMBERS PAYING HALF DUES 125 |